



Annual Report

of the
Standing Advisory Council
&
Standing Advisory Council
for Religious Education

2023-24



The Role of the Standing Advisory Council for Religious Education:

The principal roles of SACRE are:

- Advising the Local Authority on matters to do with Religious Education and collective worship, or Spiritual and Moral Development;
- Consider applications from Headteachers that their school be released from the statutory requirements for Collective Worship to be wholly or mainly of a broadly Christian character (such applications are known as 'Determinations');
- Require a Local Authority to review its Agreed Syllabus;
- Monitor the provision of RE, collective worship and spiritual, moral, social and cultural development in the schools of the Local Authority;
- Give advice on teacher agreed syllabus RE, including the choice of teacher materials;
- Advising the Local Authority on the provision of training for teachers (in RE);
- Considering complaints about the provision and delivery of RE and collective worship made to the Local Authority.
- To publish an Annual Report on its work.

The Composition of SACRE:

The statutory requirements for the setting up of SACREs require three committees of members:

- Representatives of Christian denominations or other religions and their denominations reflecting the principal religious traditions of the locality;
- Teacher representatives;
- County Council representatives.

There is also the right to co-opt members.

CONTENTS

	Page No:
1. Executive Summary.	4-5
2. Advice given to the LA:	6-13
a) Religious Education and the Agreed Syllabus	
b) Learning and Teaching and provision of Initial Teacher Training	
c) Collective Worship	
d) Constitution	
3. Other Matters:	13-15
a) Local matters	
b) National matters:	
i. Estyn	
ii. DfES (Education Wales)	
iii. WASACRE	
c) Complaints	
4. Appendices:	15-16
a) Composition of SACRE	
b) Number and dates of meetings	
c) Organisations receiving the report	
d) Newsletter	

Images on the front cover - used on license from Adobe Stock images

Executive Summary

<i>Topics/Issues:</i>	<i>Advice given:</i>	<i>Implemented By LA:</i>
RE: Agreed Syllabus	<ul style="list-style-type: none"> • Denbighshire Local Authority’s adopted the Religion, Values and Ethics Guidance as the basis of the Local Agreed Syllabus for RVE in March 2022. The Denbighshire Agreed Syllabus for RE is still applicable for secondary school years 9-11. 	✓
RE: Standards	<ul style="list-style-type: none"> • Following consideration of Inspection Reports, schools are sent letters congratulating them for the good features. 	✓
RE: Learning and teaching	<ul style="list-style-type: none"> • Supporting Guidance has been created to support schools’ understanding and planning for RVE within the Curriculum for Wales 2022. • The LA should continue to promote and make schools aware of the following: <ul style="list-style-type: none"> ○ The Agreed Syllabus for RVE ○ The Agreed Syllabus for RE ○ Supplementary guidance for RVE ○ GwE’s Unpacking the Humanities AOLE (Secondary) ○ Comprehensive Guide for RE ○ RE in the Foundation Phase ○ RE Quality Mark ○ North Wales RE Hwb Network ○ The annual newsletter contains reference to useful teaching materials ○ Agored Cymru level 2 award in exploring worldviews ○ WJEC GCSE Religious Studies - Teaching from 2025 ○ Diversity and anti-racism professional learning (DARPL) ○ National Association for Teachers of Religious Education Anti Racism resources ○ RE Today ○ Post 16 Challenging Religious Issues (E-Journal) ○ European Forum for Teachers of Religious Education ○ Welsh Governments Professional Learning Modules for RVE 	✓ ✓ ✓ ✓ ✓ ✓ ✓ ✓ ✓ ✓ ✓ ✓ ✓ ✓ ✓

RE: Provision of ITT	<ul style="list-style-type: none"> • Presentations have been received from ITT providers and the Welsh National Centre for RE. 	
Collective Worship	<ul style="list-style-type: none"> • WASACRE published guidance on the withdrawal of pupils from Collective Worship – October 2021. 	✓
Constitution	<ul style="list-style-type: none"> • An additional member representing a non-religious world view to be added to the group on SACRE representing Faiths and non-religious philosophical convictions in line with the advice provided by the Welsh Government. Humanist representation to be sought for Committee Group A. 	✓
Other Matters: Local	<ul style="list-style-type: none"> • A third newsletter has been published – the LA will distribute it to all schools. 	✓
Other Matters: National	<ul style="list-style-type: none"> • Members receive regular updates of Estyn Inspection Reports or documents relating to RE and Collective Worship. • WG released the Religion, Values and Ethics (RVE) guidance. • The SACRE maintain its membership of WASACRE. Representatives attend and report back on the meetings of the association. • Members attended the WASACRE conference hosted in Wrexham Glyndwr University. 	✓ ✓ ✓ ✓
Other Matters: additional	<ul style="list-style-type: none"> • No other additional matters. 	
Complaints	<ul style="list-style-type: none"> • No complaints received. 	

2. Advice Given to the LA

a. Religious Education and the Agreed Syllabus

i. The Agreed Syllabus

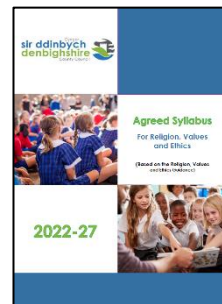
Agreed Syllabus for Religion, Values and Ethics (Curriculum for Wales 2022)

Denbighshire Local Authority Published its Locally Agreed Syllabus for Religion, Values and Ethics during the summer of 2023. The Agreed Syllabus is based on Welsh Governments' [Religion, Values and Ethics Guidance](#). Changes have been made to ensure that the document can be read as a Denbighshire Agreed Syllabus for RVE and each section is numbered to allow it to be navigated with ease.



During the academic year 2023-24, in accordance with the changes to the Curriculum for Wales 2022, Religion, Values and Ethics was taught to all primary school children and learners in year 7 and 8.

In the academic year 2023-24, secondary schools continued to teach the pre 2022 curriculum (called Curriculum for Wales 2008), including the Agreed Syllabus for Religious Education, to pupils from years 9 to 11.



To download a copy of the Denbighshire Agreed Syllabus for Religion, Values and Ethics please go to...

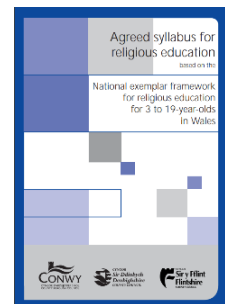
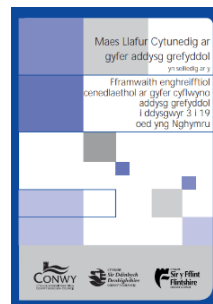
English – https://1drv.ms/b/s!Ai7Z9WAeWMNXhd8mIfgDThYuSHs_Hg?e=mHIWCW

Welsh –

<https://1drv.ms/b/s!Ai7Z9WAeWMNXhd9HfvczJ5abJjroPA?e=bugpZd>

Agreed Syllabus for Religious Education (Curriculum for Wales 2008)

The Agreed Syllabus, conforming to the requirements of the new Curriculum for Wales 2022, relates the subject titled 'Religion, Values and Ethics'. The previous Agreed Syllabus, still applicable for secondary schools for the reasons described above, relates to the subject titled 'Religious Education'. This is an important distinction.



Denbighshire adopted the 'National Exemplar Framework for Religious Education for 3-19 year olds' as the Locally Agreed Syllabus for 'Religious Education' in 2008. To download a copy of the Agreed Syllabus for Religious Education please go to:

English - <https://1drv.ms/b/s!Ai7Z9WAeWMNXhJkRqyAGO2b1HtmpnQ?e=D98kuj>

Welsh - <https://1drv.ms/b/s!Ai7Z9WAeWMNXhJkPk7GnR4j8dGRkWQ?e=WUXJSs>

ii. Standards

Examinations Reports

Due to continued guidance from Welsh Government on the way data is presented and to avoid arbitrary comparison of schools, members were not presented with and were unable to discuss the comparative examination data for examinations awarded in 2022/23.

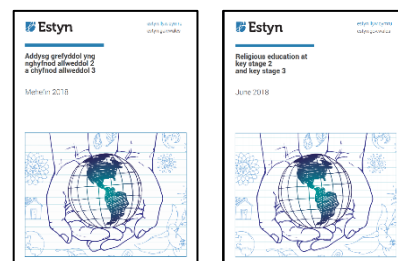
The principal education manager for Denbighshire has attended all SACRE meetings this year. There has been and will continue to be a much closer relationship between the LA and SACRE. The principal education manager will be able to identify schools requiring additional support as a result of a schools' own self-evaluation, Estyn inspections and collaboration with the regional consortia.

Inspection Reports

There are no subject judgments in the current Estyn inspection framework. Instead, members receive information from the reports relating to Estyn's comments of a schools' provision of SMSC. See part c Collective Worship - Monitoring provision - Inspection reports.

Estyn conducted a thematic review of Religious Education at key stage 2 and key stage 3. Estyn published its findings June 2018. The report provided recommendations as a result of its findings. Click image to see report:

The current attached report outlines recommendations summarised below.



Estyn provide **Supplementary Guidance** to help inspectors to consider specific aspects of education and training. In 2021, Estyn published guidance on '[Equity, human rights and English as an additional language](#)'. Many of the aspects Inspectors *should consider* when inspecting this area can be supported by effective RE or RVE teaching.

Estyn also publish **Effective Practice** case studies. The following two highlight good practice in RVE or RE.

- [Promoting pupils' multicultural and moral development.](#) (May 2024)
- [How the school uses the wider outdoor environment and community \(Cynefin\) to enhance pupils' learning experience.](#) (July 2023)

b. Learning and Teaching

Curriculum for Wales 2022

For information about the Curriculum for Wales 2022 please watch this 35 minute [training session](#) organised by Denbighshire Local Authority.

Religion, Values and Ethics – Supporting Guidance

Supporting Guidance has been created to support the understanding and planning of RVE within context of the curriculum for Wales 2022. The guidance contains information about:

- RVE concepts
- Concepts cross-referenced with the Humanities AOLE Statements of What Matters and Descriptions of Learning
- RVE Lenses
- RVE Journeys
- Points to consider for schools and settings.

Download a copy using the links below:

English - <https://1drv.ms/b/s!Ai7Z9WAeWMNXhd9Fsz8MOigIHzmFSw?e=Ft4QkH>

Welsh - <https://1drv.ms/b/s!Ai7Z9WAeWMNXhd9Yj5eNwB9YBEA2XA?e=KaQ8Cr>



GwE – Unpacking the Humanities AOLE (Secondary)

During the summer term 2022, GwE provided two training sessions for secondary school humanities teachers providing key messages regarding this AOLE.

The first session focus:

- An understanding of the mandatory elements of the Curriculum for Wales framework in relation to the Humanities
- The principles of planning and key considerations for the Humanities
- The pedagogical considerations within the 'Designing your curriculum' section outlined in the AoLE guidance

Presentation English - <http://cefnogaeth.gwegogledd.cymru/wp-content/uploads/2022/06/Humanities-Session-1.pdf>

Presentation Welsh - <http://cefnogaeth.gwegogledd.cymru/wp-content/uploads/2022/06/Dyniaethau-1.pdf>

Video English - <https://www.youtube.com/watch?v=b3LpzxDCERw>

Video Welsh - <https://www.youtube.com/watch?v=b3LpzxDCERw&t=7s>

The second session focus:

- Developing a shared understanding of the learning continuum
- Considering approaches to planning and assessment
- Exploring effective pedagogical approaches within and beyond the AoLE

Presentation English - <http://cefnogaeth.gwegogledd.cymru/wp-content/uploads/2022/07/Session-2-Humanities-eng.pdf>

Presentation Welsh <http://cefnogaeth.gwegogledd.cymru/wp-content/uploads/2022/07/Sesiwn-2-Dyniaethau -CYFRWNG-CYMRAEG.pdf>

Video English - <https://www.youtube.com/watch?v=ZuE-HbpwB1Y&t=3s>

Video Welsh - <https://www.youtube.com/watch?v=Z1gemVVRzZQ>

Religious Education

SACRE and the LA have previously provided comprehensive documents and materials in support of the Agreed Syllabus for Religious Education, and these contain advice on methods of teaching and delivery of RE.

The planning documents, 'Comprehensive Guide to RE' and 'RE in the Foundation Phase', which complement the Agreed Syllabus for Religious Education, continue to

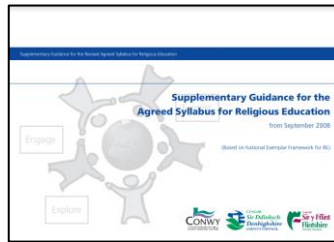
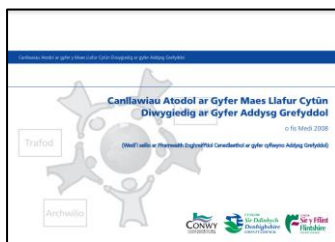
be accessed and used by schools. These resources may be adapted for the delivery of RVE in the primary sector and will continue to be relevant to year groups being taught Religious Education. The resources are available on a Hwb Network - North Wales Religious Education Network. To download a copy of these resources please see below:

Comprehensive Guide to RE

English -

https://drive.google.com/file/d/1G9jCYby8XQJgg9m8JN6HYA3sr_iR5E18/view?usp=sharing

Welsh - <https://drive.google.com/file/d/1OsNQ-UtnokWTIWzxBuJQfz7tVLohhml/view?usp=sharing>

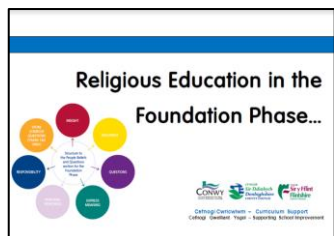


RE in the Foundation Phase

English - <https://drive.google.com/file/d/1X-9J8auJglQ-GzGk12o-002s81gdQ8tV/view?usp=sharing>

Welsh -

https://drive.google.com/file/d/17itLQaqOsQ6WjLdk_ee1AlaigdqwKW0w/view?usp=sharing



Religious Education Quality Mark



Self-evaluation materials continue to be promoted and are available on the REQM website. The RE Quality Mark recognises, celebrates and publicises outstanding religious education in all primary and secondary schools in England, Wales and Northern Ireland through its three levels of award,

bronze, silver and gold. More information about the quality mark can be found on

<https://www.reqm.org/>

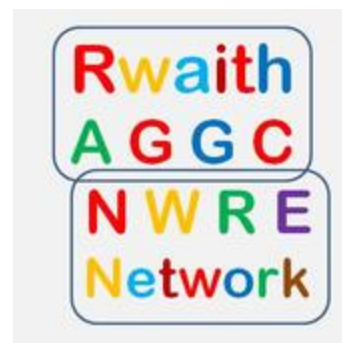
Self Evaluation Materials:

[RE-Quality-Mark-Criteria-2024.docx](#)

[Meini-Prawf-MAAG-2024.docx](#)

North Wales RE Hwb Network

Teaching and research materials are available for teachers accessible through Hwb's - North Wales RE network - <https://hwb.gov.wales/go/d8tfh3>. Only those with a Hwb account will be able to access the materials on this network. The network contains teaching resources and research material relevant to Religious Education.



Key research material available is:

- [Big Ideas for Religious Education – Edited by Barbara Wintersgill](#) (English only)
- [Signposts – Policy and practice for teaching about religions and non-religious world views](#) (English only)
- [A pedagogy of embrace : a theology of hospitality as a pedagogical framework for religious education in Church schools](#) (English only)
- [How well does a cross curricular Humanities Scheme of Work reflect the four purposes of the new Wales Curriculum 2022?](#)

RE:Online



[RE:Online](#) is a website developed by Culham St Gabriel's to equip and resource teachers and educational professionals to support high Quality religion and worldviews education.

AGORED CYMRU LEVEL 2 AWARD IN EXPLORING WORLDVIEWS

'Exploring Worldviews' is a suite of level 1 and 2 qualifications supporting an understanding of religious and non-religious worldviews. The qualification meets the three core skills set out in the exemplar framework (current curriculum), and it provides opportunities for exploring the concepts for RVE through the statements of what matters in the Humanities area of learning and experience in the Curriculum for Wales (new curriculum). It is not designed to replace the current Religious Studies GCSE, however, it will provide an accessible recognised qualification whilst allowing a school to meet its statutory obligation at Key Stage 4. More details can be found by visiting



English - <https://www.agored.cymru/Units-and-Qualifications/Learning-Core/Exploring-Worldviews>

Welsh - <https://www.agored.cymru/Unedau-a-Chymwysterau/Craidd-Dysgu/Archwilio-Bydolygon>

WJEC GCSE Religious Studies - Teaching from 2025



Specification for the GCSEs and 'A' level courses can be accessed here.

- [GCSE](#)
- [A Level](#)

The following [Link](#) includes dates for the publication of the specification, assessment materials and guidance for teaching.

Diversity and anti-racism professional learning (DARPL)

DARPL's website contains a range of training material to support this important aspect of the Curriculum for Wales 2022.

English - <https://darpl.org/>

Welsh - <https://darpl.cymru/>



National Association for Teachers of Religious Education



Schools have been informed of anti-racist resources made available by NATRE. Unfortunately, these resources are only available in the English language. They can be accessed here...

<https://www.natre.org.uk/about-natre/projects/anti-racist-re/>

RE Today Services

[RE today](#) provides resources to support teachers as they engage with the Curriculum for Wales.



Post 16 Challenging Religious Issues (E-Journal)

Challenging Religious Issues is a journal for students and teachers of AS and A-level Religious Studies. It is also a useful

resource for anyone who wants to develop or refresh their subject knowledge. Over 65 open access journal articles have been published in the journal so far including articles written by leading scholars and practitioners. The articles are linked to

Religious Studies A-level specifications. The articles are interactive through the use of 'discussion points' and live links to relevant external websites. All issues are available in English and Welsh. The St Giles' Centre has funded and managed the Welsh language version from issue 14 onwards. Please click the link below to access the Challenging Religious Issues from the St Giles website.

English - <https://stgilescentre.org/16-2/>

Welsh - <https://stgilescentre.org/cy/16-2/>



European Forum for Teachers of Religious Education

Teaching of RE differs greatly across Europe. For a greater insight into RE in neighbouring countries visit www.eftre.net



Religion, values and ethics (RVE): what's new?

These resources are intended to support practitioners with the changes to RVE (formerly Religious Education), within the Curriculum for Wales. The modules are specifically tailored and aim to support practitioners. They help with the transition to a new way of thinking, planning and delivering an RVE curriculum that is purposeful for learners in Wales. There are currently five modules:

English - [Repository - Hwb \(gov.wales\)](#)

Cymraeg - [Repository - Hwb \(gov.wales\)](#)



CREFYDD, GWERTHOEDD A MOESG: BETH SY'N NEWYDD?

Bwriad yr adnoddau hyn yw cefnogi ymarferwyr gyda'r newidiadau i Grefydd, Gwerthoedd a Moeseg (Addysg Grefyddol gynt), o fewn y Cwricwlwm i Gymru. Mae'r modiwlau wedi'u teilwra'n benodol ac yn anelu at gefnogi ymarferwyr. Maent yn helpu gyda'r newid i ffordd newydd o feddwl, cynllunio a chyflwyno cwricwlwm Crefydd, Gwerthoedd a Moeseg sy'n bwrpasol i ddysgwyr yng Nghymru.

Saesneg - [Repository - Hwb \(gov.wales\)](#)

Cymraeg - [Repository - Hwb \(gov.wales\)](#)

ITT provision



SACRE members received presentations from The Welsh National Centre for RE based at Bangor University. Teachers across the LA can access professional support from centre staff. The centre provides A level and GCSE revision materials and classes and Professional Learning for secondary teachers a range of religions and worldviews.

2 Welsh National Centre for RE Staff teach on the 1 year PCSE secondary course. Primary PGSE and BE'd students receive lectures on RVE as part of their CaBan. CaBan is a partnership between schools, Bangor University, the Regional Consortium (GwE) and the research institute CIEREI.



c) Collective Worship

Monitoring provision

Inspection Reports

The Estyn supplementary guidance on inspecting collective worship was updated in November 2017 and continues to state that Estyn requires inspection teams to consider the provision for pupils' spiritual development and daily acts of Collective Worship in all non-denominational schools. Inspection teams must consider these aspects on each inspection and each report is likely to contain some comment of these aspects of pupils' development. However, it is



not expected that inspectors will report on the quality of Collective Worship. It is up to each inspection team to weigh up the significance of any strengths and weaknesses in each inspection area.

There is no expectation for inspectors to report on whether a school meets the statutory duty to provide a daily act of collective worship, there would be an expectation of a comment in the report if a school were to be found in breach of its statutory duty.

As part of the process of monitoring, Estyn Inspection Reports are analysed for comments on collective worship and spiritual, moral, social and cultural development (SMSC). These are compiled and noted by SACRE. Letters are sent to schools following the consideration of them in SACRE, commending good practice. Estyn restarted inspections during the summer 2022. 10 Inspection reports were analysed and presented to SACRE members during the Summer Term meeting.

Positive Comments in Inspection Areas:	No of schools
Wellbeing and attitudes to learning	5
Teaching and Learning Experiences	7
Care, Support and Guidance	10

INSET for Collective Worship

WASACRE published guidance on the withdrawal of pupils from Collective Worship – October 2021.

English - <https://drive.google.com/file/d/1ul4lrhIHGeDrKC2EYU3LpypJdsussTX0/view>

Welsh - <https://drive.google.com/file/d/149OtijKIL4F3qYbLXUVYzv4cRGhyk4IL/view>

Other useful guidance on Collective Worship:

English - [GUIDANCE ON COLLECTIVE WORSHIP JUNE 2012](#)

Welsh - [\(C\) GUIDANCE ON COLLECTIVE WORSHIP](#)

Determinations

No Determinations have been made.

d) Constitution

No changes have been made to the constitution.

3) Other Matters

a) Local

SACRE members met three times during the academic year. All three meets were held virtually.

Newsletter

Conwy and Denbighshire published its third newsletter. It provides schools with news related to RE/RVE and is especially important during the preparation for the new curriculum. The third edition contains information about the Curriculum for Wales. It also contains useful information about the WASACRE summer conference held at Wrexham's Glyndwr University.



RVE Network

Denbighshire County Council created a Microsoft TEAMS during the summer 2022. The network 'DCC Religion, values & ethics 2022' allows teachers to access the Agreed Syllabus, the Supporting Guidance and other useful material. To access the network please use the following link:



<https://teams.microsoft.com/l/team/19%3aSJHouQczzZxDrh7YWAFqk1FKtFzQ-A5hN8e8y856Zfg1%40thread.tacv2/conversations?groupId=aac98823-0b35-48fab2a-5e711bb714c6&tenantId=4f3f0e52-b734-4164-9409-1b601d147993>

b) National

i. Estyn:

Estyn Inspection Framework 2024 onwards:

Estyn inspection guidance for schools inspected from Sept 2024-2030 was published during the summer. Documents explaining what and how Estyn inspect can be accessed on the Estyn Website

How we inspect

English - [How We Inspect - 2024 maintained schools and PRUs \(gov.wales\)](#)

Welsh [Sut rydym yn arolygu Ysgolion a gynhelir ac UC Dau 0.pdf \(gov.wales\)](#)

What we inspect

English - [What We Inspect - 2024 Maintained Schools and PRUs \(gov.wales\)](#)

Welsh - [Beth rydym yn ei arolygu - Ysgolion a gynhelir ac UC Dau \(gov.wales\)](#)



ii. Welsh Government - Education and Skills:

Supporting framework for RE

SACRE members were informed of Professional Learning resources supporting the roll out of the new curriculum, created by a Welsh Government and WASACRE collaboration. These resources were published Summer 2023:

Welsh Medium Playlist -

<https://hwb.gov.wales/repository/resource/eef7e399-93bb-4d7c-ab68-145c93f4c6d3>

English Medium Playlist - <https://hwb.gov.wales/repository/resource/eef7e399-93bb-4d7c-ab68-145c93f4c6d3>



iii. WASACRE

Members of SACRE and the LA were represented at three meetings of WASACRE and received some of the presentations that had been made. SACRE continued to receive reports from representatives attending the meetings of the Association. Minutes and papers from WASACRE have also been presented at SACRE meetings. Minutes and presentations can be found on WASACRE's website <http://wasacre.org.uk/>.



The WASACRE conference 2024 included an in-person conference day held on 13th June and a series of online seminars. The conference day, held at Wrexham University, provided delegates with keynote talks from Graham Donaldson, Lynne Neagle MS (Cabinet Secretary for Education and the Bishop of Llandaff, Rt Revd Mary Stallard. Attendees were able to choose from a selection of workshops from teachers and RVE professionals celebrating good practice in the Curriculum for Wales. Contact lordp2@hwbcymru.net for details about accessing the videos and seminar materials

c) Complaints

No complaints were received by the SACRE.

4. Appendices:

a) Composition of SACRE

Representing Religious Denominations and Non-Religious Philosophical Convictions:

Church in Wales
Jennie Downes

Roman Catholic
Collette Owen

Baptist Union
Nomination awaited (Welsh)
Nomination awaited (English)

Presbyterian
Rev. Brian H Jones (Welsh)
Nomination awaited (English)

Methodist
Rev. Martin Evans-Jones

United Reformed
Nomination awaited

Union of Welsh Independents
Nomination awaited

Religious Society of Friends
Dominic Oakes

Humanist
Suzy Sturley

Representing Teacher Associations:

Secondary Headteacher
Leah Crimes

Junior Headteacher
Nomination awaited

Secondary RE Specialists
Sarah Griffiths

Infant Headteacher
Nomination awaited

Special School Teachers
Nomination awaited

Junior Classroom Teacher
Susan Williams

Infant Classroom Teacher
Nomination awaited

Representing Denbighshire County Council

Councillor Ellie Chard
Councillor Cheryl Williams
Councillor Ann Davies
Councillor Gill German

Councillor Merfyn Parry
Councillor Huw Williams
Councillor Delyth Jones
Councillor Emrys Wynne

Co-opted Members:

Tania Ap Sion – Director of the St. Mary's Centre

b) Number and dates of meetings

SACRE Meetings:

- 9th October 2023
- 15th February 2024
- 19th June 2024

c) Organisations receiving the report

- DFES
- Denbighshire Schools
- The report is available on the WASACRE website for interested organisations.